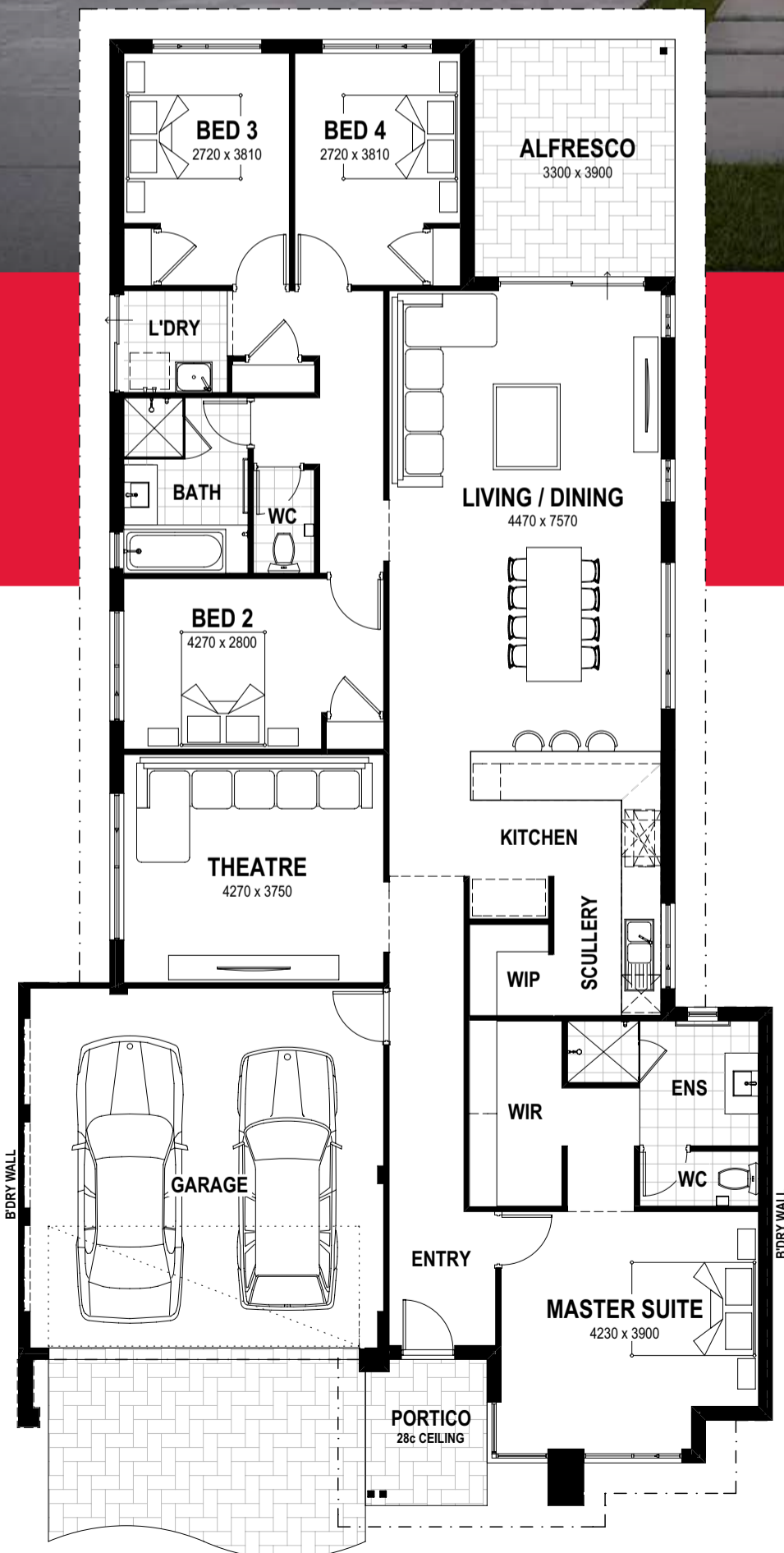


“ Love the display but looking for a more affordable option? Noir 12.5 is for you! ”



## Noir 12.5

4 2 2

- » A unique design to suit stylish first homebuyers wishing to seek a balance between functionality and sleek, modern trends.
- » The impressive kitchen with scullery is in the heart of the home and a true entertainer's delight perfectly positioned for the family to gather around.
- » The open plan living zone to the rear of the home is ideal for socialising with sliding glass doors to the alfresco area for year-round entertaining.
- » Three children's bedrooms are set well away from the large master suite, a true haven with private ensuite and massive walk-in robe.
- » Versatility is key to harmonious family living, with this in mind the home theatre is privately positioned at the front of the home, set away from the open plan entertaining zone.

TOTAL HOME AREA: 233.69m<sup>2</sup> MIN LOT WIDTH: 12.49m

Your first  
home made

# Easy

## » Let us help you

With easyassist, first home ownership has never been easier. Maybe you need to get on track for a deposit. Or you're struggling to keep on top of your rental payments. No worries; there's an easyassist solution tailored for you, so your options for home ownership have never been easier.

## » No matter your financial situation, we can help

We make it our business to know about all the extra funding that's available to first home buyers. We're experts at identifying what you're entitled to, including the First Home Owners Grant\*. We even help you apply for it. Together with our experienced in-house finance team, we're dedicated to helping you realise your first home dream. We'll work hard to make it easy for you.

### Build your first home in just three easy steps:

1



Clear your debt with our  
Debt Assist

2



\$2,500 Deposit

3



Turn the Key

## WA's first home buyers specialist

We help you every step of the way. From finding the best home loan, to securing your ideal location and designing your perfect home. Proudly part of the Summit Homes Group, our commitment to making home ownership easy and affordable makes us the first choice for first home buyers in WA.

**Perth Metro**  
(08) 9333 0833

**Bunbury**  
(08) 9722 0300

**Busselton**  
(08) 9722 0370



\*Terms and conditions apply. Images for illustrative purposes only.

[easystarthomes.com.au](http://easystarthomes.com.au)



PROUDLY PART OF THE SUMMIT HOMES GROUP  
New Home Building | Renovation & Improvements | Developments | Investments | Realty | In-house Finance



BRN10699