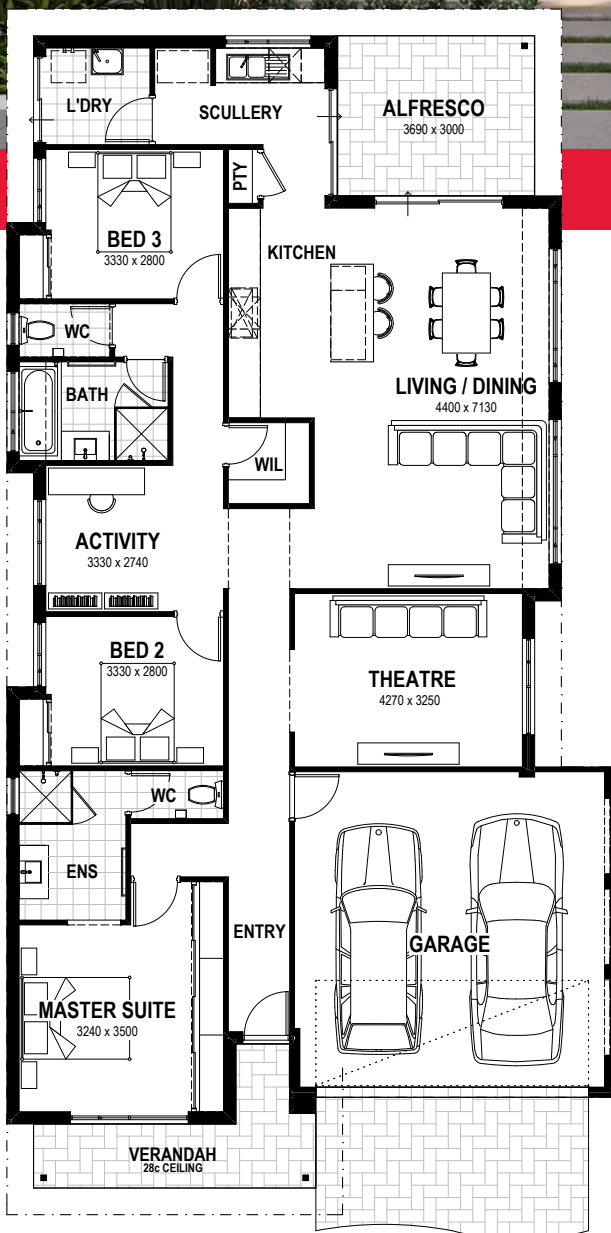
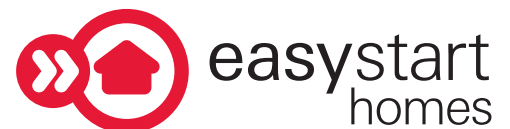


Toronto 12.5



3 2 2

- » Maximise family living with the open plan living areas to the rear of the home, with an array of windows flood the room creating an inviting space for the whole family to enjoy. A separate home theatre provides a private place to unwind.
- » The opulent master suite to the front of the home features huge triple sliding doors to the built-in robe as well as a large, well-appointed ensuite.
- » The amazing kitchen includes tons of benchspace and island bench which is great for casual dining, plus an offset scullery with basin and fridge recess nicely tucked away - perfect for when you're entertaining guests.
- » The alfresco extends seamlessly from the entertaining zones and scullery, ideal for everyday convenience.
- » Children will love their own separate wing to the home with an activity room, family bathroom, separate WC and lots of storage.



TOTAL HOME AREA: 215.28m² MIN LOT WIDTH: 12.44m

Your first
home made

Easy

» Let us help you

With easyassist, first home ownership has never been easier. Maybe you need to get on track for a deposit. Or you're struggling to keep on top of your rental payments. No worries; there's an easyassist solution tailored for you, so your options for home ownership have never been easier.

» No matter your financial situation, we can help

We make it our business to know about all the extra funding that's available to first home buyers. We're experts at identifying what you're entitled to, including the First Home Owners Grant*. We even help you apply for it. Together with our experienced in-house finance team, we're dedicated to helping you realise your first home dream. We'll work hard to make it easy for you.

Build your first home in just three easy steps:

1



Clear your debt with our
Debt Assist

2



\$2,500 Deposit

3



Turn the Key

WA's first home buyers specialist

We help you every step of the way. From finding the best home loan, to securing your ideal location and designing your perfect home. Proudly part of the Summit Homes Group, our commitment to making home ownership easy and affordable makes us the first choice for first home buyers in WA.

Perth Metro
(08) 9333 0833

Bunbury
(08) 9722 0300

Busselton
(08) 9722 0370



easystarthomes.com.au